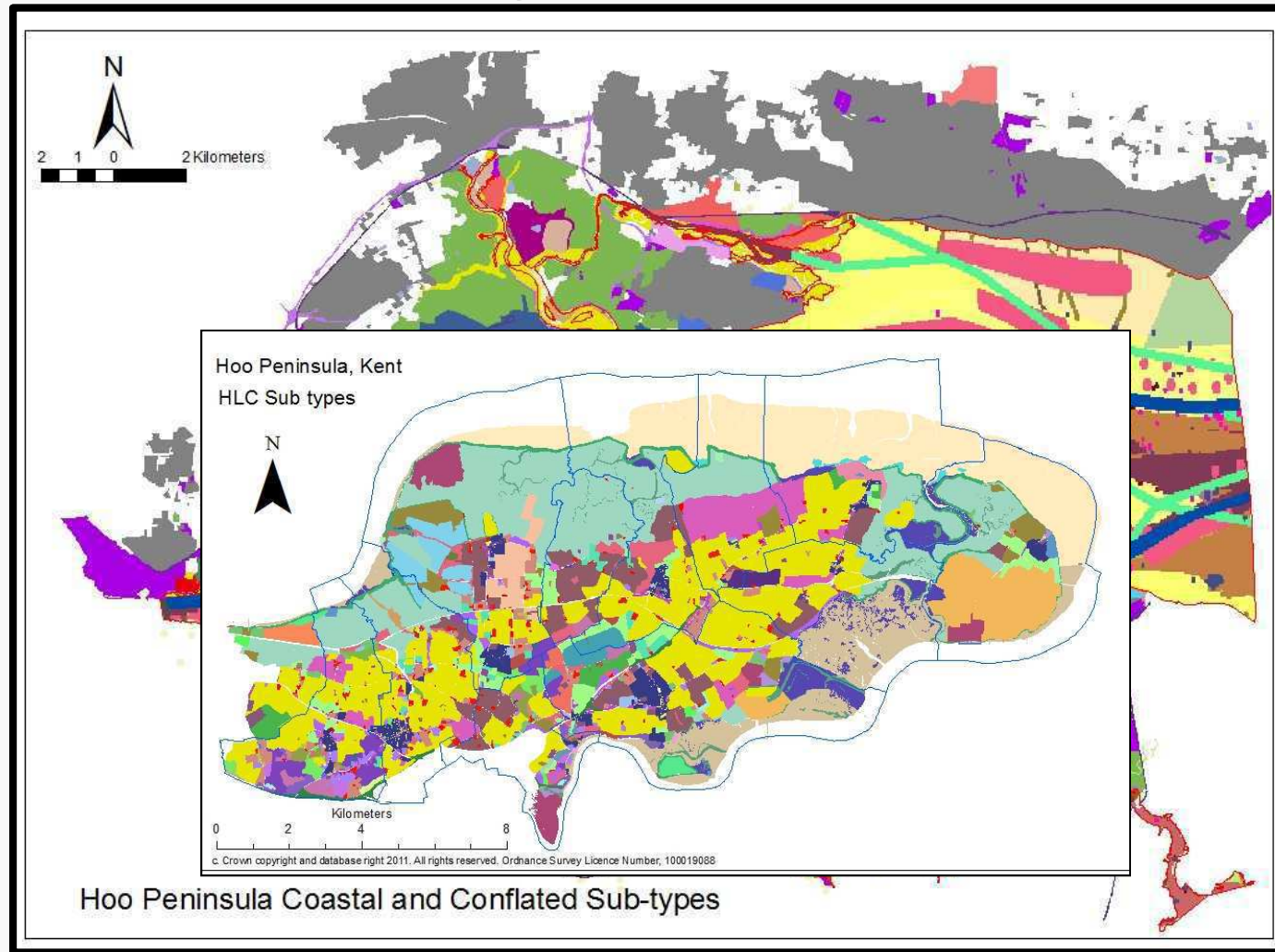


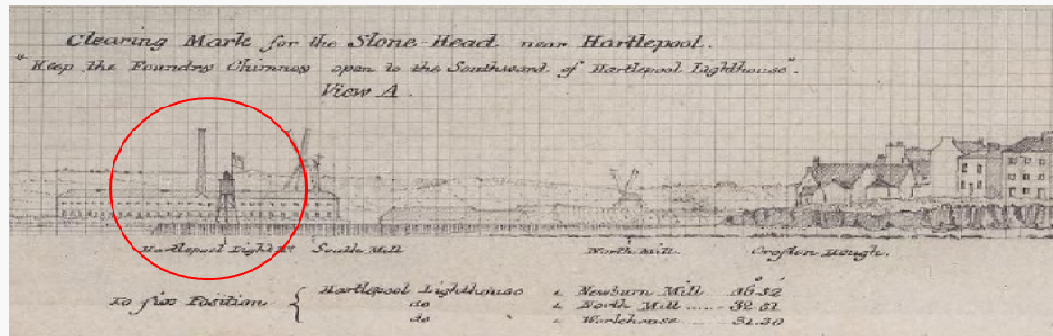
Fine grained HSC (and HLC)



Hoo Peninsula, Kent: Coastal and Conflated HSC mapping (Dr Nikki Bannister)
and HLC sub-types

Uses national HSC method to give more detailed focus for specific applications

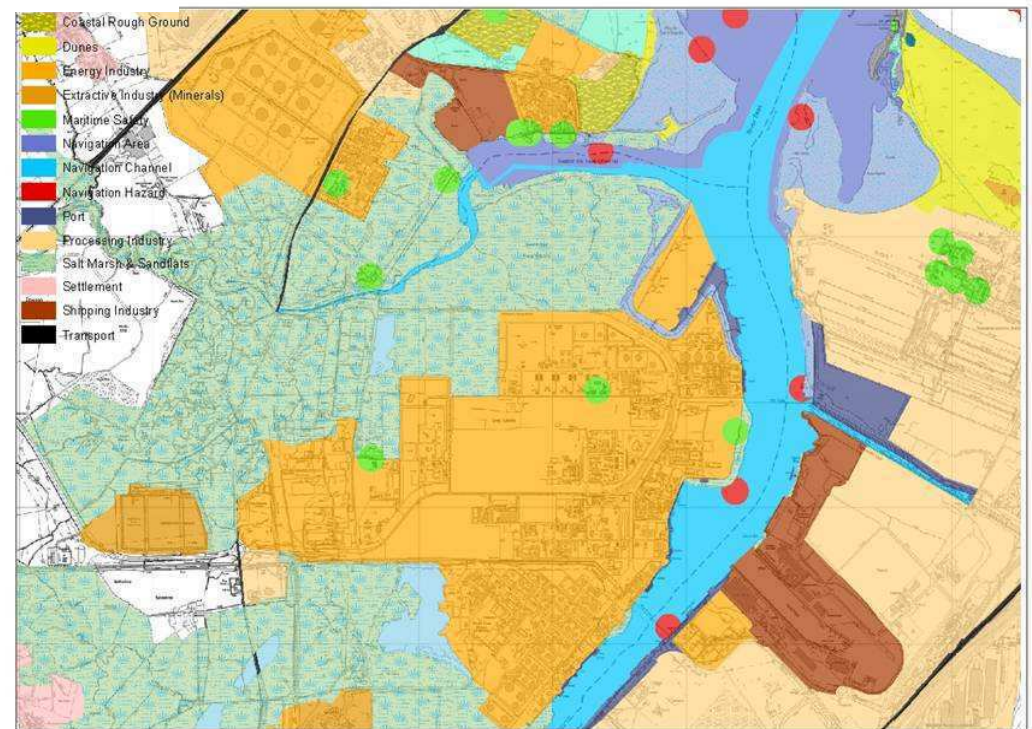
HSC and HLC overlap on coastal land: HSC's maritime perspective complements HLC's 'View from Land'



Coast profile (folio) for guiding sailors safely into Hartlepool (© UKHO)

19th century mariners' coastal profile,
Hartlepool

© UKHO



Teesside: current OS mapping
© Crown copyright

HSC already informing 'landscape/seascape' inputs for offshore windfarm EIA ESs, in addition to 'cultural heritage' theme.

An Approach to Seascape Character Assessment

[illegible]

Natural England *Approach to Seascape Character Assessment* (SCA) 2012
identifies HSC and HLC as core data streams in SCA workflow

© NATURAL ENGLAND 2011

Marine Plan Preparation 2010-2021

Marine and Coastal Access Act 2009:

Section 54(4): Marine Plan preparation, implementation & review to keep under review 'cultural characteristics' of plan areas, specifically including 'historic' &

'archaeological' Marine Policy Statement 2011 on 'seascape': in considering impact of an activity/development, Marine Plan Authority should take into account existing character & quality

Marine Management Organisation (MMO) will be using NE SCA Approach in Marine Plan prep. and has agreed to use HSC in coming Marine Plan prep for South inshore/offshore



English Heritage has:

- supplied MMO with HSC data completed to date
- agreed to complete HSC coverage of MP South areas by Spring 2013

HSC national coverage will be in place ahead of all subsequent Marine Plan prep

Coastal land planning: HSC complements HLC as historic evidence base, adding maritime perspective to inform

character

National Planning Policy Framework



Core Planning Principles:

‘Planning should: ‘take account of the different roles and **character of different areas**, promoting the vitality of our main urban areas, protecting the Green Belts around them, recognising the **intrinsic character** and beauty **of the countryside** and supporting thriving rural communities within it.’

Section 7, Requiring Good Design, para 58:

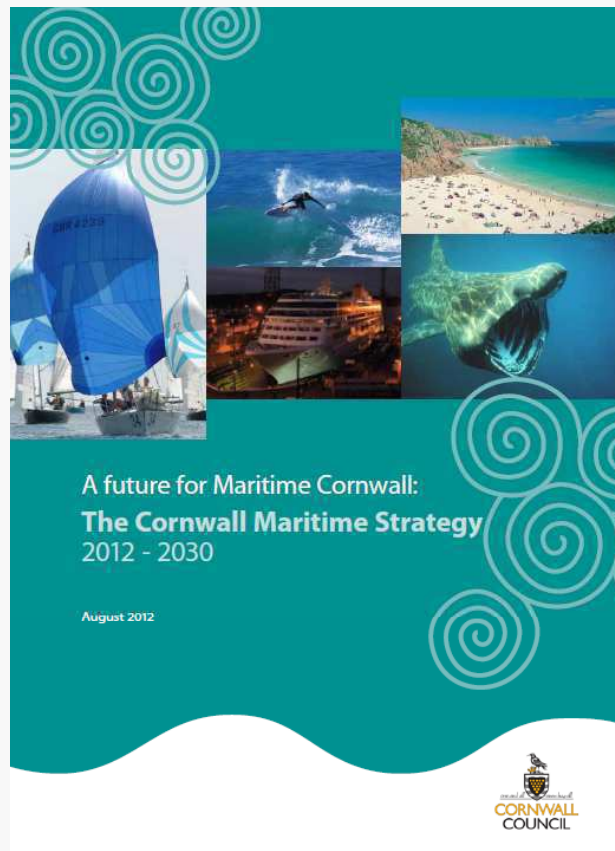
Local and neighbourhood plan policies that set out the quality of development that will be expected for their area should be based on stated objectives for the future of the area **and an understanding and evaluation of its defining characteristics.**’

Section 12, Conserving and enhancing the historic environment, para 126

In developing ‘a positive strategy for the conservation and enjoyment of the historic environment’, local planning authorities should take into account:

- ‘the desirability of new development making **a positive contribution to local character and distinctiveness**; and
- opportunities to draw on **the contribution made by the historic environment to the character of a place.**’

Coastal land planning: HSC relevance to LA coastal land



strategies
Cornwall Council's Maritime Strategy (Adopted Aug 2012)

p9: 'landscapes and seascapes have heavily influenced Cornwall's history and economic development and still today help to forge its character and cultural identity. These characteristics provide the basis for Cornwall's strong maritime economy and individual coastal communities.'

p16: 'assessment of landscape and seascape (including historic landscape/seascape)' given as example of the 'integrated approaches' needed to inform 'maritime, coastal and terrestrial Council functions'

Views landscape and seascape as

- a positive asset for economic development, hugely important in creating distinctiveness of place and an environment in which people choose to live, work and build businesses
- relevant to all economic activity and community cohesion in the area, not just an asset for the tourism industry

Far from being an economic 'negative': an issue 'to be accommodated'

HSC applications: building cultural narratives that engage with public interest, raising awareness and understanding


Informing public on the roles of change in shaping the present



Some seascapes form cultural icons with enormous historic resonance



© National Trust

A photograph of a sunset over the sea. The sky is filled with orange and yellow clouds, with the sun low on the horizon. In the foreground, a small white boat is on the water, and a red buoy is visible. A dark silhouette of a pier or breakwater runs across the middle ground.

'The sea is all about us'

The Dry Salvages T.S. Eliot

www.english-heritage.org.uk/characterisation